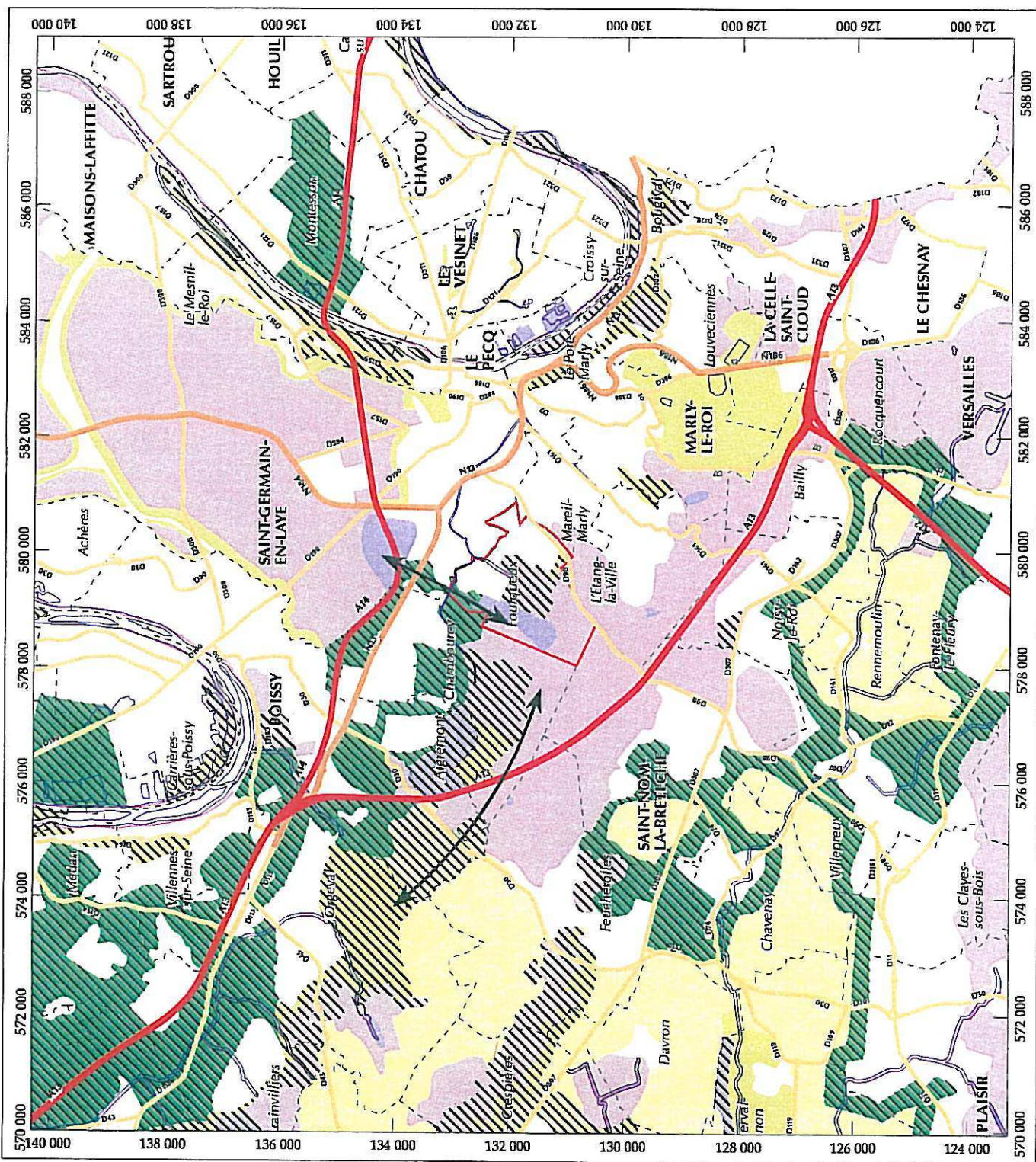


# Schéma départemental des espaces naturels

(Délibération du Conseil Général du 16 Avril 1999)

Commune de Fourqueux



C:\WORKSPACE\MAPP\UML\CPD001\00SDENSGNECOT1-251.AML

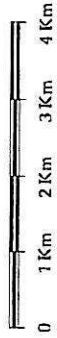
composition du Mercredi 23 Novembre 2005








© Conseil Général des Yvelines (DAU / PE / SEN / S.I.G.) - 2005

Plan de situation



Échelle: 1/100.000



-  Coupe verte et maîtrise des fronts urbains
-  Espace d'intérêt paysager
-  Espace agricole
-  Espace à vocation de loisirs
-  Espace d'intérêt écologique
-  Principaux flux écologiques
-  Secteur stratégique